





# WHAT IS A RIDE?

A RIDE IS NOT A TRIP.  
 IT'S NOT A VACATION.  
 IT'S A PROCESS, A DISCOVERY.  
 IT'S A PROCESS OF SELF-DISCOVERY.  
 A RIDE BRINGS US FACE TO FACE WITH OURSELVES.  
 A RIDE SHOWS US NOT ONLY THE WORLD BUT HOW WE FIT IN IT.  
 CURVES, LANDSCAPES, ADRENALINE, FREEDOM.  
 THE RIDE IS LIFE ITSELF.  
 WHEREVER WILL NEXT RIDE TAKE YOU  
 FALCO TECHNICAL FOOTWEAR WILL MAKE IT  
 A COMFORTABLE, EMOTIONAL ONE.





JEREMY GUARNONI (FR)



LEANDRO TATI MERCADO (ARG)



# FACTORY INTERNATIONAL RIDERS



GARY JOHNSON (U.K.)



MIKE DI MEGLIO (FR)



KLEMEN GERCAR (SLO)



JAUME ABELLA (ES)



IVAN LAZZARINI (IT)



**MOTOGP:**

MIKE DI MEGLIO (FR)

**WORLD SUPERBIKE CHAMPIONSHIP:**

JEREMY GUARNONI (FR)  
BRYAN STARING (AUS)

**WORLD SUPERSTOCK CHAMPIONSHIP:**

LEANDRO TATI MERCADO (ARG)

**WORLD ENDURANCE CHAMPIONSHIP:**

RICK OLSON (AUS)  
ANTONIO ALARCOS (ES)  
ARTURO TIZON (ES)

**BRITISH SUPERBIKE:**

MITCH CARR (AUS)

**ROAD-RACING/ISLE OF MAN:**

GARY JOHNSON (U.K.)

**ASIAN ROAD RACING CHAMPIONSHIP:**

MARK AITCHISON (AUS)

**CAMPIONATO ITALIANO VELOCITÀ:**

ALESSIO VELINI (IT)  
ILARIO DIONISI (IT)

**MXGP:**

KLEMEN GERCAR (SLO)  
VSEVOLOD BRYLYAKOV (RUS)  
MAXIME DESPREY (FR)

**EMX:**

THOMAS KJAER OLSEN (DK)  
KALLE OLSSON (SWE)

**ENDURO WORLD CHAMPIONSHIP:**

JAUME ABELLA (ES)

**WORLD SUPERMOTO CHAMPIONSHIP:**

IVAN LAZZARINI (IT)

# HIGHLIGHTED FALCO EXCLUSIVETECH

➔ KEEP AN EYE OUT FOR THESE ICONS

**01.**  MULTIPLE-PIECES INTEGRATED ARTICULATION SYSTEM TO PROVIDE ADDITIONAL ANKLE SUPPORT. REAR-BUTTON QUICK UN-LOCKING SYSTEM FOR INCREASED FOOT MOVEMENT. EXTENDED HEEL PROTECTOR WITH SHOCKABSORBING WEDGE.


SISTEMA INTEGRATO DI ARTICOLAZIONE CON PULSANTE DI SGANCIAMENTO RAPIDO POSTERIORE PER MAGGIOR AMPIEZZA DI MOVIMENTO DEL PIEDE. PROTEZIONE TALLONE SAGOMATA CON ELASTOMERO AD ELEVATO ASSORBIMENTO D'IMPATTO.

SYSTÈME DE ARTICULATION AVEC BOUTON DE DÉBLOCAGE RAPIDE A L'ARRIERE. COQUE TALON AVEC PREMIERE DE SEMELLE ANTI-SHOCK.

**02.**  INNOVATIVE FALCO ONE-PIECE MOULDED PROTECTION INTEGRATING TOE-FINGERS SHIELD, GEAR CHANGE PAD AND "ALU-ZINC" SLIDER.

INNOVATIVO PUNTALE DI PROTEZIONE INTEGRANTE SCUDO PUNTA PIEDE, PARALEVA E SLIDER "ALU-ZINC".

POINTE MOULÉE DANS UNE SEULE PIÈCE AVEC LA PROTECTION SELECTEUR DE VITESSE ET LE SLIDER EN "ALU-ZINC".

**03.**  MULTIPLE-PIECES INTEGRATED SECURITY SKELETON TO SUPPORT MOVEMENTS OF FOOT. INTEGRATED P.U. HEAT-SHIELD. REINFORCED ARCH SUPPORT.


SCHIELETRO INTEGRATO DI SICUREZZA SU ARTICOLAZIONE PIEDE. SCUDO TERMICO PARAMARMITTA INTEGRATO. ARCATA PIEDE RINFORZATA.

SYSTÈME DE SQUELETTE POUR L'ARTICULATION DU PIED. PROTECTION ECHAPPEMENT EN P.U., PREMIERE DE RENFORT SEMELLE.

**04.**  ONE-PIECE MOULDED CHASSIS FOR INCREASED PROTECTION AND DURABILITY. IMPACT DAMPENING EVA MIDSOLE. DOUBLE-COMPOUND HIGH-GRIPPING SOLE.


SCAFO MONO-SCocca IN P.U. INIETTATO PER MAGGIORE PROTEZIONE E DURABILITÀ DI UTILIZZO. INTERSUOLA IN EVA ANTI-SHOCK. SUOLA CON DOPPIA MESCOLO AD ALTO GRIP.

COQUE UNIQUE EN P.U. POUR UN MEILLEURE PROTECTION ET DURABILITÉ. PREMIERE DE SEMELLE ANTI-SHOCK. SEMELLE EN CAOUTCHOUC DOUBLE MELANGE.

**05.**  FALCO MEMBRANE RESISTANT TO WATER PENETRATION. THE ONLY SCIENTIFIC TEST TO DETERMINE, DEFINE AND INDICATE WHETHER A MOTORCYCLE BOOT IS WATERPROOF IS THE TEST REQUIRED BY THE REGULATIONS EN 13634: 2010. THE TESTING METHOD CONSISTS OF WALK OF 100 STEPS ON A SUITABLE PLATFORM WITH WATER LEVEL 5MM ABOVE THE SOLE. AT THE SUCCESSFUL COMPLETION OF THIS TEST THE BOOT IS CONSIDERED WATERPROOF.

MEMBRANA ESCLUSIVA FALCO RESISTENTE ALLA PENETRAZIONE DELL'ACQUA. L'UNICO METODO SCIENTIFICO PER DETERMINARE, DEFINIRE ED INDICARE SE UNO STIVALE DA MOTO È WATERPROOF È PREVISTO DALLA NORMATIVA EN 13634:2010. IL TEST CONSISTE IN UNA CAMMINATA DI 100 PASSI SU UNA PIATTAFORMA IDONEA CON ACQUA 5MM AL DI SOPRA DELLA SUOLA. AL SUPERAMENTO DI QUESTO TEST LO STIVALE VIENE DEFINITO IMPERMEABILE.

MEMBRANE FALCO RESISTANTE À LA PÉNÉTRATION DE L'EAU. LA SEULE FAÇON SCIENTIFIQUE AFIN DE DÉTERMINER, DE DÉFINIR ET D'INDIQUER SI UNE BOTTE MOTO EST ÉTANCHE EST LE TEST REQUIS PAR LA NORME EN 13634: 2010. IL S'AGIT D'UNE MARCHE DE 100 PAS SUR UNE PLATEFORME APPROPRIÉE DANS DE L'EAU À 5MM AU-DESSUS DE LA SEMELLE. À LA RÉUSSITE DE CE TEST LA BOTTE EST DECLARÉ ÉTANCHE.

**06.**  LINING FEATURING SUPERIOR PERFORMING CHARACTERISTICS AND IS STRUCTURALLY DEVELOPED TO BE EXTREMELY BREATHABLE, ANTI-BACTERIAL, QUICK DRYING AND ENVIRONMENT FRIENDLY.

FODERA STRUTTURAMENTE SVILUPPATA PER UNA ESTREMA TRASPIRABILITÀ E RAPIDA ASCIUGATURA.

DOUBLURE CONÇU POUR ASSURER LE MAXIMUM DE VENTILATION ET SALUBRITÉ AU PIED.

**07.**  

CRAFT CONSTRUCTIVE SYSTEM OF THE BOOT AROUND THE LAST REPRODUCING MEN'S OR WOMEN'S FOOT ANATOMY. THIS TECHNIQUE ALLOWS TO REACH A HIGHER LEVEL OF COMFORT, TO EXTEND UTILIZATION TIME AND TO MATCH DIFFERENT RIDING CONDITIONS.

METODO COSTRUTTIVO DIFFERENZIATO PER UOMO E DONNA IN BASE ALLA DIVERSA ANATOMIA DEL PIEDE. QUESTA TECNICA PERMETTE UN MAGGIORE LIVELLO DI COMFORT E PERSONALIZZAZIONE DI UTILIZZO.

SYSTÈME DE CONSTRUCTION DÉVELOPPÉ POUR ADAPTER LA BOTTE À L'ANATOMIE DU PIED SOIT MASCULIN QUE FÉMININ.

**08.** 

"D30™ IMPACT PROTECTION" DEVELOPED IN SNOW-SPORTS AND MILITARY INDUSTRY IS FIRST APPLIED TO MOTORCYCLE BOOTS BY FALCO. "D30™ INTELLIGENT MOLECULES™" FLOW FREELY WHEN MOVING SLOWLY BUT ON SHOCK LOCK TOGETHER IN NET TO ABSORB IMPACT ENERGY. TRANSMITTED FORCE TO ANKLE-FOOT AREA IS SIGNIFICANTLY REDUCED THANKS TO D30™ EXCLUSIVE SUPPORT.

IL POLIMERO INTELLIGENTE D30™ SVILUPPATO NELL'INDUSTRIA MILITARE E DEGLI SPORT INVERNALI È ORA APPLICATO IN ESCLUSIVA SUI MIGLIORI PRODOTTI FALCO. LE MOLECOLE D30™ SI LEGANO IN CASO DI URTO FAVORENDO L'ASSORBIMENTO DELL'ENERGIA DI IMPATTO. LA FORZA NEGATIVA TRASMESSA ALLA CAVIGLIA VIENE RIDOTTA IN MANIERA SIGNIFICATIVA.

FALCO POUR PREMIER S'IMPOSE DANS LA FABRICATION DE BOTTES MOTO EN UTILISANT EN EXCLUSIVITÉ LE POLYMÈRE INTELLIGENT D30™, DEVELOPPÉ ET UTILISÉ DANS LES SPORTS D'HIVER ET L'INDUSTRIE MILITAIRE. IL SE COMPOSE PAR DES MOLÉCULES INTÉLLIGENTES QUI ABSORBENT L'ÉNERGIE DE L'IMPACT. SON SUPPORT AU NIVEAU DES MALLÉOLES RÉDUIT SIGNIFICATIVEMENT TOUTE PRESSION NÉGATIVE.

**09.** 

AIRCOOL PATENTED BREATHABLE SYSTEM FEATURES A WATERPROOF MEMBRANE THAT FILTERS MOISTURE OUT OF THE SHOE THROUGHOUT THE VENTILATION INSERTS PLACED AT BOTTOM OF SOLE. AIRCOOL AIR CONDITION REGULATES AIRFLOW, WARMTH AND DAMPNES INSIDE THE SHOE.

IL SISTEMA DI AREAZIONE DELLA SUOLA AIRCOOL PRESENTA UNA MEMBRANA IMPERMEABILE IN GRADO DI ESPELLERE L'UMIDITÀ GRAZIE AI FORI DI AREAZIONE POSTI SUL FONDO DELLA SUOLA, REGOLANDO COSÌ IL RICICLO D'ARIA, IL CALORE E L'UMIDITÀ A CONTATTO CON IL PIEDE.


LE SYSTEME DE AERATION DE LA SEMELLE AIRCOOL EST CARACTERISE PAR UNE MEMBRANE ETANCHE QUI REPOUSSE LA MOITEUR A L'EXTERIEUR PAR DES TROUS DE AERATION AU BOUT DE LA SEMELLE EN PERMETTANT CIRCULATION D'AIR, ELIMINATION DE CHALEUR ET DE MOITEUR.

**10.** 

ITALIAN CRAFTSMANSHIP'S CONTROL OVER DESIGN, MATERIALS AND CONSTRUCTION METHODS IS THE KEY OF FALCO CUSTOMERS' LOYALTY AND FAST GROWING WORLDWIDE SUCCESS.

LA QUALITÀ DELLA MANIFATTURA ITALIANA È LA CHIAVE DEL SUCCESSO E DELLA FEDELITÀ DEI CLIENTI FALCO.

LA QUALITÉ DE FABRICATION ITALIENNE EST LA CLÉ DU SUCCÈS FALCO DANS LE PANORAMA MONDIAL.

**11.** 

CE BRANDING ON BOOTS INDICATES THE CONFORMITY OF THE PRODUCT BASED ON THE EUROPEAN DIRECTIVE 89/686/CEE AND SUBSEQUENT AMENDMENTS, MORE PRECISELY IT SATISFIES ESSENTIAL HEALTHCARE AND SECURITY REQUIREMENTS OF THE ATTACHMENT II OF THE EUROPEAN DIRECTIVE 89/686/CEE. IN PARTICULAR THIS COMPLIANCE HAS BEEN VERIFIED AND CERTIFIED THROUGH CE CERTIFICATION AND LAB TESTS ACCORDING TO THE CORRESPONDING NORM EN 13634:2010. EUROPEAN STANDARD EN 13634:2010 INCLUDES TWO PERFORMANCE LEVELS IN TERMS OF THE PROTECTION AFFORDED. WITHIN STANDARD EN 13634:2010 "LEVEL 1" PERFORMANCE IS DEEMED AS THE MINIMUM LEVEL REQUIRED, "LEVEL 2" OFFERS INCREASED PERFORMANCE. LEVELS CONFIRM FOLLOWING TESTS COMPLIANCES: ABRASION RESISTANCE (LEVEL 1 = FLEX AREAS MIN 1.5SEC+UPPER MIN 2.5SEC, LEVEL 2 = FLEX AREAS MIN 5SEC + UPPER MIN 12SEC), CUT RESISTANCE (LEVEL 1 = FLEX AREAS MAX 25MM / 2.0MS+UPPER MAX 25MM/2.8MS, LEVEL 2 = FLEX AREAS MAX 25MM / 2.0MS + UPPER MAX 15MM/2.8MS); RIGIDITY OF BOTTOM (LEVEL 1 = MIN 1.0KN, LEVEL 2 = MIN 1.5KN); OPTIONAL REQUIREMENTS (IPA, IPS, WR, FO, SRA-SRB-SRCB)

LA MARCATURA CE APPOSTA SUGLI STIVALI INDICA LA CONFORMITÀ DEL PRODOTTO ALLE PRESCRIZIONI DELLA DIRETTIVA EUROPEA 89/686/CEE E SUCCESSIVE MODIFICHE, E PIÙ PRECISAMENTE SODDISFA I REQUISITI ESSENZIALI DI SALUTE E SICUREZZA DELL'ALLEGATO II DELLA DIRETTIVA EUROPEA 89/686/CEE. IN PARTICOLARE TALE CONFORMITÀ È STATA VERIFICATA E CERTIFICATA ATTRAVERSO LA PROCEDURA DI CERTIFICAZIONE CE E PROVE DI LABORATORIO SECONDO LA NORMA ARMONIZZATA EN 13634:2010. LA NORMA EN 13634:2010 INCLUDE 2 LIVELLI DI PERFORMANCE IN TERMINI DI PROTEZIONE OFFERTA. CON LO STANDARD EN 13634:2010 "LEVEL 1" LA PERFORMANCE VA CONSIDERATA AL MINIMO LIVELLO, "LEVEL 2" OFFRE UNA PERFORMANCE MIGLIORE. I LIVELLI INDICANO IL SUPERAMENTO DEI SEGUENTI TEST: RESISTENZA ABRASIONE (LEVEL 1 = FLEX AREAS MIN 1.5SEC + UPPER MIN 2.5SEC, LEVEL 2 = FLEX AREAS MIN 5SEC + UPPER MIN 12SEC), RESISTENZA TAGLIO (LEVEL 1 = FLEX AREAS MAX 25MM / 2.0MS + UPPER MAX 25MM / 2.8MS, LEVEL 2 = FLEX AREAS MAX 25MM / 2.0MS + UPPER MAX 15MM / 2.8MS); RESISTENZA RIGIDITÀ TRASVERSALE FONDO (LEVEL 1 = MIN 1.0KN, LEVEL 2 = MIN 1.5KN); REQUISITI OPZIONALI (IPA, IPS, WR, FO, SRA-SRB-SRCB)

LE MARQUAGES CE SUR LES BOTTES INDIQUE LA CONFORMITÉ DU PRODUIT AUX PRESCRIPTIONS DE LA DIRECTIVE EUROPÉENNE 89/686/CEE ET DE DIFFÉRENTES MODIFICATIONS DE CETTE DIRECTIVE, ET PLUS PRÉCISÉMENT RÉPOND AUX CRITÈRES ESSENTIELS DE SANTÉ ET SURETÉ DE LA PIÈCE JOINTE II DE LA DIRECTIVE EUROPÉENNE 89/686/CEE. TELLE CONFORMITÉ EN PARTICULIERE A ÉTÉ VÉRIFIÉE ET CERTIFIÉE À TRAVERS LA PROCEDURE DE CERTIFICATION CE ET LES TESTS DE LABORATOIRE SELON LA NORME HARMONISÉE EN 13634:2010. LA NORME EN13634:2010 DONNE 2 NIVEAUX DE PERFORMANCE EN TERMES DE PROTECTION OFFERTE PAR LA NORME EN 13634:2010 "LEVEL 1" LA PERFORMANCE DEVRAIT ÊTRE CONSIDÉRÉE COMME LE NIVEAU MINIMUM DE PROTECTION, "LEVEL 2" OFFRE DES MEILLEURES PERFORMANCE.

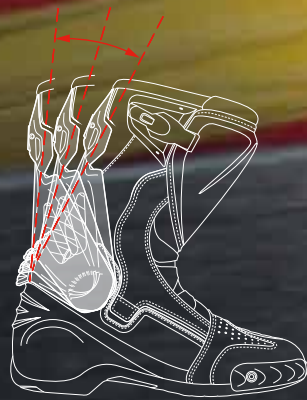
LES NIVEAUX SONT RELIÉS À L'ÉPREUVE SUIVANTE: RÉSISTANCE A L'ABRASION (LEVEL 1 = FLEX AREAS MIN 1.5SEC + UPPER MIN 2.5SEC, LEVEL 2 = FLEX AREAS MIN 5SEC + UPPER MIN 12SEC); RÉSISTANCE A LA COUPE (LEVEL 1 = FLEX AREAS MAX 25MM / 2.0MS + UPPER MAX 25MM / 2.8MS, LEVEL 2 = FLEX AREAS MAX 25MM / 2.0MS + UPPER MAX 15MM / 2.8MS); RIGIDITÉ DE LA SEMELLE (LEVEL 1 = MIN 1.0KN, LEVEL 2 = MIN 1.5KN); PRESCRIPTIONS FACULTATIVES (IPA, IPS, WR, FO, SRA-SRB-SRCB)

# RACING\_LINE

ON-TRACK PERFORMANCE, EVOLVING TECHNOLOGY,  
UNCOMPROMISED SAFETY



ESO | motion 2



MULTIPLE-PIECES INTEGRATED ARTICULATION SYSTEM TO PROVIDE ADDITIONAL ANKLE SUPPORT. REAR-BUTTON QUICK UN-LOCKING SYSTEM FOR INCREASED FOOT MOVEMENT. EXTENDED HEEL PROTECTOR WITH SHOCKABSORBING WEDGE.

TECH TOE



INNOVATIVE FALCO ONE-PIECE MOULDED PROTECTION INTEGRATING TOE-FINGERS SHIELD, GEAR CHANGE PAD AND "ALU-ZINC" SLIDER.



## ESO PRO 2 BOOTIE VERSION

ESO | motion2 TECH | AIR-TECH | D30 | CE

ART. 309 / ESO PRO 2 / ITALIA-BLACK-WHITE / WHITE / BLACK

EU 39 - 40 - 41 - 42 - 43 - 44 - 45 - 46 - 47  
US 7 - 7,5 - 8 - 8,5 - 9 - 10 - 11 - 12 - 13

## ESO LX

ESO | motion2 TECH | AIR-TECH | CE

ART. 307 / ESO LX / ITALIA-BLACK-WHITE / WHITE / BLACK

EU 39 - 40 - 41 - 42 - 43 - 44 - 45 - 46 - 47  
US 7 - 7,5 - 8 - 8,5 - 9 - 10 - 11 - 12 - 13

## OXEGEN 2

AIR-TECH | D30 | CE

ART. 316 / OXEGEN 2 / BLACK / BLACK-WHITE

EU 38 - 39 - 40 - 41 - 42 - 43 - 44 - 45 - 46 - 47  
US 6 - 7 - 7,5 - 8 - 8,5 - 9 - 10 - 11 - 12 - 13

## OXEGEN 2 WTR WATERPROOF VERSION

HIGH-TEX | D30 | CE

ART. 317 / OXEGEN 2 WTR / BLACK / BLACK-WHITE

EU 38 - 39 - 40 - 41 - 42 - 43 - 44 - 45 - 46 - 47  
US 6 - 7 - 7,5 - 8 - 8,5 - 9 - 10 - 11 - 12 - 13



"Micro-Synth" upper and "Air-Tech" vented lining. "Eso-Motion 2" articulation with rear-button unlocking-system. P.U. moulded "Tech-Toe" protection. Micro-adjustable aluminum buckle closure. "Alu-Zinc" replaceable slider. Dual-density racing rubber sole with reinforced arch support. **Only for 309 ESO PRO 2 version: Removable inner bootie featuring "D30" impact protection ankle cups.**

Tomaia in "Micro-Synth" e fodera interna "Air-Tech". Supporto articolazione "Eso-Motion 2" con pulsante posteriore di sganciamento rapido. Protezione punta "Tech-Toe" in P.U. Chiusura con leva in alluminio microregolabile. Slider in "Alu-Zinc" sostituibile. Suola racing a doppia densità con arcata rinforzata. **Solo per versione ESO PRO 2: Scarpetta interna estraibile con inserti "D30" impact protection.**

Tige en "Micro-Synth" et doublure "Air-Tech". Système de articulation "Eso-Motion 2" avec bouton deblocage rapid a l'arriere. Embout de renfort "Tech-Toe" en P.U. Crochet aluminium de fermeture. Slider "Alu-Zinc" amovible. Semelle racing double melange caoutchouc. **Uniquement pour model ESO PRO 2: Chausson interieur amovible avec inserts de protection "D30".**

"Micro-Synth" Upper. "Hexagon" ventilation on shin, heel and rear calf plates. "D30" ankle cups inserts. "Air-Tech" vented lining. Repleceable "Black-Zinc" slider. High grip rubber racing sole. **Only for 317 OXEGEN 2 WTR version: "High-Tex" membrane**

Tomaia in "Micro-Synth". Sistema di ventilazione "Hexagon" su placca frontale, tallone e polpaccio. Inserto malleolo in "D30". Fodera ventilata "Air-Tech". Slider sostituibile in "Black-Zinc". Suola racing ad alto grip. **Solo per versione 317 OXEGEN 2 WTR: membrana "High-Tex"**

Tige en "Micro-Synth". Renforts tibia, talon et mollet avec system de ventilation "Hexagon". Insert malleole en "D30". Doublure "Air-Tech". Slider "Zinc-Noir" amovible. Semelle caoutchouc melange special. **Uniquement pour model 317 OXEGEN 2 WTR: membrane "High-Tex"**



# ADVENTURE/ TOURING\_LINE

EXPERIENCED CRAFTSMANSHIP, YEAR-ROUND COMFORT,  
TESTED WEATHER-PROOFNESS

**ACF|men**

**ACF|women**

CRAFT CONSTRUCTIVE SYSTEM OF THE BOOT AROUND THE LAST REPRODUCING MEN'S OR WOMEN'S FOOT ANATOMY. THIS TECHNIQUE ALLOWS TO REACH A HIGHER LEVEL OF COMFORT, TO EXTEND UTILIZATION TIME AND TO MATCH DIFFERENT RIDING CONDITIONS.



METAL TOE-CUP OPTIONAL

**AVANTOUR**



**ART. 415 / AVANTOUR / BROWN / BLACK**

EU 41 - 42 - 43 - 44 - 45 - 46 - 47 - 48  
US 8 - 8,5 - 9 - 10 - 11 - 12 - 13 - 14

Full-grain oil-treated leather upper. "High-Tex" waterproof membrane. P.U. moulded shin plate and "Eso-Motion 2" rear articulation system. "D3O" backed ankle cups. Black alu-buckles and velcro closure. "Goodyear" welded enduro sole.

Tomaia in pelle pieno fiore con trattamento idro-repellente e membrana interna "High-Tex". Placca frontale sagomata in PU e sistema di articolazione posteriore "Eso-Motion 2". Inserti malleolo "D3O". Leve in alluminio micro-regolabili e sostituibili. Suola enduro in gomma ad alta resistenza con cucitura "Goodyear".

Tige cuir plein fleur graisé et membrane "High-Tex". Renfort tibia en P.U. et Systeme de articulation "Eso-Motion 2". Inserts malleole en "D3O". Crochets aluminium replaceable. Semelle enduro en caoutchouc haut resistance.

**MIXTO 2  
ADV**



**ART. 412 / MIXTO 2 ADV / BROWN**

EU 38 - 39 - 40 - 41 - 42 - 43 - 44 - 45 - 46 - 47 - 48  
US 6 - 7 - 7,5 - 8 - 8,5 - 9 - 10 - 11 - 12 - 13 - 14



**MIXTO 2**



**ART. 411 / MIXTO 2 / BLACK**

EU 38 - 39 - 40 - 41 - 42 - 43 - 44 - 45 - 46 - 47 - 48  
US 6 - 7 - 7,5 - 8 - 8,5 - 9 - 10 - 11 - 12 - 13 - 14



Full-grain oil-treated leather upper and "High-Tex" membrane. Contoured P.U. moulded shin plate. "D3O" material ankle cups. Micro-adjustable buckles closure. Leather heat-shield. Heavy-duty textured sole.

Tomaia in pelle pieno fiore ingrassata e membrana interna "High-Tex". Placca frontale sagomata in P.U.. Inserti malleoli in "D3O". Leve micro-regolabili. Scudo termico paramarmitta. Suola in gomma con grip differenziato.

Tige cuir plein fleur graisé et membrane "High-Tex". Renfort tibia en P.U. Inserts malleole en "D3O". Fermeture crochets. Semelle caoutchouc.





**KODO 2**

ART. 579 / KODO 2 / BLACK



EU 37 - 38 - 39 - 40 - 41 - 42 - 43 - 44 - 45 - 46 - 47  
US 5 - 6 - 7 - 7,5 - 8 - 8,5 - 9 - 10 - 11 - 12 - 13

Full-grain oil-treated leather upper. "High-Tex" waterproof membrane. Countoured P.U. moulded shin and "D3O"-backed ankle inserts. Elasticated rear calf panel. High-grip textured touring sole

Tomaia in pelle pieno fiore e membrana interna "High-Tex". Placca frontale sagomata in PU e rinforzi malleolo "D3O". Pannello elastico posteriore. Suola touring in gomma con grip differenziato.

Tige cuir plein fleur et membrane "High-Tex". Renfort tibia en P.U. Inserts malleole "D3O". Insert elastique confort du mollet. Semelle caoutchouc haut resistance.



**FRONTIER**



ART. 846 / FRONTIER / BLACK / BROWN

EU 39 - 40 - 41 - 42 - 43 - 44 - 45 - 46 - 47  
US 7 - 7,5 - 8 - 8,5 - 9 - 10 - 11 - 12 - 13

Full-grain leather upper and "High-Tex" membrane. Reinforced shin, toe and heel. P.U. moulded malleolus inserts. Slip-in easy entry. High-grip rubber sole.

Tomaia in pelle pieno fiore e membrana interna "High-Tex". Rinforzi su stinco, punta e tallone. Insetto malleolo in materiale in P.U. Suola in gomma ad alto grip.

Tiege cuir plein fleur et membrane étanche "High-Tex". Renforts tibia, point et talon. Inserts malleole en P.U. Semelle en caoutchouc melange special.



**AXIS 2**



ART. 330 / AXIS 2 / BLACK / BLACK-WHITE

EU 37 - 38 - 39 - 40 - 41 - 42 - 43 - 44 - 45 - 46 - 47  
US 5 - 6 - 7 - 7,5 - 8 - 8,5 - 9 - 10 - 11 - 12 - 13

"Micro-Synth" upper and "High-Tex" membrane. Innovative moulded heel protector. "D3O" material ankle cups. Shock-absorbing wedge on heel bottom. Dual density racing sole.

Tomaia in "Micro-Synth" e membrana "High-Tex". Tallone rinforzato in P.U. con elastomero anti-shock. Inserti "D3O" su malleolo. Suola racing a doppia densità.

Tige en "Micro-Synth" et membrane "High-Tex". Renfort du talon avec elastomère antishock. Semelle caoutchouc double-melange.



## CRUISE

**HIGH-TEX** **AIR-TECH** **D3O** **CE**

**ART. 481 / CRUISE / BLACK**

**EU** 39 - 40 - 41 - 42 - 43 - 44 - 45 - 46 - 47  
**US** 7 - 7,5 - 8 - 8,5 - 9 - 10 - 11 - 12 - 13

"Micro-Synth" upper and "High-Tex" membrane. Ventilated "Air-Tech" textile inserts. "D3O" material ankle cups. Reinforced shin plate. Velcro pull-tab quick closure. Reflective rear insert. High-grip textured touring sole.

Tomaia in "Micro-Synth" e membrana "High-Tex". Inserti in tessuto ventilato "Air-Tech". Protezioni "D3O" su malleolo. Placca frontale rinforzata. Chiusura rapida a velcro. Inserto reflex posteriore. Suola touring in gomma con grip differenziato.

Tige en "Micro-Synth" et membrane "High-Tex". Inserts "Air-Tech" pour ventilation du pied. Renfort antérieur et inserts malleoles "D3O". Fermeture rapid velcro. Semelle touring en caoutchouc melange special Falco.



## MITO 2

**HIGH-TEX** **AIR-TECH** **CE**

**ART. 951 / MITO 2 / BLACK**

**EU** 37 - 38 - 39 - 40 - 41 - 42 - 43 - 44 - 45 - 46 - 47 - 48  
**US** 5 - 6 - 7 - 7,5 - 8 - 8,5 - 9 - 10 - 11 - 12 - 13 - 14

"Micro-Synth" upper and "High-Tex" membrane. Ventilated "Air-Tech" textile inserts. Malleolus and shin reinforcements. Elasticized calf insert. P.U. moulded gear pad. Rear reflective panel. High-grip textured touring sole.

Tomaia in "Micro-Synth" e fodera interna con membrana "High-Tex". Inserti in tessuto ventilato "Air-Tech". Rinforzo su stinco e malleolo. Inserto elasticizzato polpaccio. Inserto paramarce in P.U. Inserto posteriore riflettente. Suola touring in gomma con grip differenziato.

Tige cuir et membrane "High-Tex". Inserts "Air-Tech" pour ventilation du pied. Renforts antérieur et malleole en P.U. Insert elastique confort du mollet. Semelle touring en caoutchouc melange special Falco.



## LIBERTY 2

**HIGH-TEX** **AIR-TECH** **CE**

**ART. 960 / LIBERTY 2 / BLACK**

**EU** 38 - 39 - 40 - 41 - 42 - 43 - 44 - 45 - 46 - 47  
**US** 6 - 7 - 7,5 - 8 - 8,5 - 9 - 10 - 11 - 12 - 13

P.U. coated synthetic upper and "High-Tex" membrane. Ventilated "Air-Tech" textile inserts. Malleolus and shin reinforcements. P.U. moulded gear pad. Rear reflective piping. High-grip textured touring sole.

Tomaia in P.U. sintetico e fodera interna con membrana "High-Tex". Inserti in tessuto ventilato "Air-Tech". Rinforzo su stinco e malleolo. Inserto paramarce in P.U. Inserto posteriore riflettente. Suola touring in gomma con grip differenziato.

Tiege P.U. synthétique et membrane étanche "High-Tex". Inserts "Air-Tech" pour ventilation du pied. Renforts antérieur et malleole en P.U. Semelle touring en caoutchouc melange special Falco.



# WOMEN\_LINE

PURE DESIGN, HIDDEN PROTECTION, FEMININE ELEGANCE

**ACF|women**

CRAFT CONSTRUCTIVE SYSTEM OF THE BOOT AROUND THE LAST REPRODUCING WOMEN'S FOOT ANATOMY. THIS TECHNIQUE ALLOWS TO REACH A HIGHER LEVEL OF COMFORT, TO EXTEND UTILIZATION TIME AND TO MATCH DIFFERENT RIDING CONDITIONS.



## VENUS 2

**HIGH-TEX** ADVANCED MEMBRANE CE

ART. 648 / VENUS 2 / BLACK / BLACK-ICE

EU 35 - 36 - 37 - 38 - 39 - 40 - 41  
US 5 - 6 - 6,5/7 - 7,5/8 - 8,5 - 9 - 9,5

Full-grain leather upper and "High-Tex" membrane. Abs reinforced shin plate and malleolus inserts. Elastic insert for calf comfort. P.U. gear pad. Special grip rubber sole.

Tomaia in pelle pieno fiore su forma speciale donna. Fodera interna con membrana "High-Tex". Protezione frontale e malleoli in ABS. Inserto elastico comfort su polpaccio. Paramarce in P.U.. Suola grip con tacco rialzato.

Tige pleine fleur et doublure "High-Tex". Renforts tibia et malleole. Insert elastique comfort du mollet. Renfort selecteur en P.U.. Semelle caoutchouc grip special.



## AYDA

**HIGH-TEX** ADVANCED MEMBRANE CE

ART. 652 / AYDA / BLACK

EU 36 - 37 - 38 - 39 - 40 - 41  
US 6 - 6,5/7 - 7,5/8 - 8,5 - 9 - 9,5

Full-grain oil-treated leather upper and "High-Tex" membrane. Malleolus and shin reinforcements. Removable gear-pad. New high-heeled rubber sole.

Tomaia in pelle con trattamento idrofobico. Membrana "High-Tex". Rinforzo su stinco e malleolo. Paramarce rimuovibile. Suola donna Falco con tacco rialzato.

Tige cuir avec traitement hydrophobic. Doublure "High-Tex". Inserts malleole. Renfort selecteur amovible. Semelle femme en caoutchouc melange special Falco.



## DYVA 2

**HIGH-TEX** ADVANCED MEMBRANE  CE

ART. 650 / DYVA 2 / BLACK

EU 36 - 37 - 38 - 39 - 40 - 41  
US 6 - 6,5/7 - 7,5/8 - 8,5 - 9 - 9,5

Full-grain leather upper and "High-Tex" membrane. P.U. moulded ankle plates. Zipper closure and elasticated rear calf panels. Removable gear-pad. High-heel Vibram touring sole.

Tomaia in pelle pieno fiore e membrana "High-Tex". Protezione malleoli in P.U. Chiusura con cerniera ed inserto elastico comfort posteriore. Paramarce rimovibile. Suola in gomma con tacco rialzato.

Tige cuir pleine fleur et membrane "High-Tex". Renforts malleole en P.U. Fermature eclaire et insert elastique comfort du mollet. Renfort selecteur amovible. Semelle caoutchouc melange special.



## DANY

**HIGH-TEX** ADVANCED MEMBRANE CE

ART. 654 / DANY / BLACK

EU 35 - 36 - 37 - 38 - 39 - 40 - 41  
US 5 - 6 - 6,5/7 - 7,5/8 - 8,5 - 9 - 9,5

Full-grain oil-treated leather upper and "High-Tex" membrane. Reinforced toe, heel and malleolus inserts. Removable gear-pad. Oil-proof rubber sole.

Tomaia in pelle con trattamento idrofobico e membrana "High-Tex". Rinforzi su punta, tallone e malleolo. Paramarce rimuovibile. Suola in gomma anti-olio.

Tiege cuir avec traitement hydrophobic. Doublure "High-Tex". Inserts pointe, talon et malleole. Renfort selecteur amovible. Semelle femme en caoutchouc.

# ALL-USES/ URBAN\_LINE

DISTINCTIVE LOOK, UNPARALLED COMFORT, EVERY-DAY USE



**ACF**/men

**ACF**/women

CRAFT CONSTRUCTIVE SYSTEM OF THE BOOT AROUND THE LAST REPRODUCING MEN'S OR WOMEN'S FOOT ANATOMY. THIS TECHNIQUE ALLOWS TO REACH A HIGHER LEVEL OF COMFORT, TO EXTEND UTILIZATION TIME AND TO MATCH DIFFERENT RIDING CONDITIONS.



## ADAM 2

**HIGH-TEX** **AIR-TECH** **CE**

ART. 989 / ADAM 2 / BLACK

EU 39 - 40 - 41 - 42 - 43 - 44 - 45 - 46  
US 7 - 7,5 - 8 - 8,5 - 9 - 10 - 11 - 12 - 13

Suede leather upper and "High-Tex" membrane. "Air-Tech" vented inserts. P.U. moulded ankle inserts. Laces and velcro closure. Real rubber oil-proof sole.

Tomaia in pelle scamosciata e membrana interna "High-Tex". Inserti in tessuto ventilato "Air-Tech". Protezione malleolo in P.U. Chiusura combinata con lacci e velcro. Suola in gomma anti-olio.

Tige en croute velour et membrane "High-Tex". Insert "Air-Tech" pour ventilation du pied. Insert malleole en P.U. Fermeture lacet et velcro. Semelle en caoutchouc melange special.



## MOD 2

**HIGH-TEX** **AIR-TECH** **CE**

ART. 891 / MOD 2 / BLACK

EU 39 - 40 - 41 - 42 - 43 - 44 - 45 - 46 - 47  
US 7 - 7,5 - 8 - 8,5 - 9 - 10 - 11 - 12 - 13

Suede leather upper and "High-Tex" membrane. "Air-Tech" vented inserts. Reinforced toe and heel inserts. TPU malleolus insert. Laces and velcro closure. Falco rubber sole.

Tomaia in pelle scamosciata e membrana interna "High-Tex". Inserti in tessuto ventilato "Air-Tech". Puntale e tallone rinforzati. Inserto TPU su malleoli. Chiusura facilitata con lacci e velcro. Suola Falco in gomma.

Tige en croute velour. Doublure "High-Tex". Insert "Air-Tech" pour ventilation du pied. Renforts pointe, talon. Inserts malleole en TPU. Fermeture lacet et velcro. Semelle Falco en caoutchouc.



## SHIRO

**HIGH-TEX** **D3O** **CE**

ART. 893 / SHIRO / BLACK / BROWN

EU 39 - 40 - 41 - 42 - 43 - 44 - 45 - 46 - 47  
US 7 - 7,5 - 8 - 8,5 - 9 - 10 - 11 - 12 - 13

Full-grain oil-treated leather and "Denim-Tex" upper. "High-Tex" membrane. Reinforced toe and heel inserts. "D3O" malleolus inserts. Laces and zipper combined closure. Falco rubber sole.

Tomaia in pelle pieno fiore con trattamento idro-fobico e "Denim-Tex". Membrana interna "High-Tex". Puntale e tallone rinforzati. Inserti "D3O" su malleoli. Chiusura combinata con lacci o cerniera. Suola Falco in gomma.

Tige cuir plein fleur avec traitement hydrophobic et inserts "Denim-Tex". Membrane "High-Tex". Inserts malleoles "D3O". Fermeture eclaire et lacet. Semelle Falco en caoutchouc.



## KAMILA

**HIGH-TEX** **CE**

ART. 659 / KAMILA / ANTHRACITE-GREY-FUCHSIA / LIGHT-GREY-RED

EU 36 - 37 - 38 - 39 - 40 - 41  
US 6 - 6,5/7 - 7,5/8 - 8,5 - 9 - 9,5

Full-grain oil-treated leather upper. "High-Tex" membrane. P.U. moulded ankle inserts. Laces and velcro closure. Dual-compound urban sole.

Tomaia in pelle pieno fiore con trattamento idro-fobico. Membrana interna "High-Tex". Protezione malleolo in P.U. Chiusura combinata con lacci e velcro. Suola in gomma a doppia densità.

Tige cuir plein fleur avec traitement hydrophobic. Membrane "High-Tex". Renforts malleole en P.U. Fermeture lacet et velcro. Semelle caoutchouc double melange.



## TREK

**HIGH-TEX** ADVANCED MEMBRANE  

ART. 870 / TREK / MATT-BLACK / CAMEL-BROWN / DARK-BROWN

EU 37 - 38 - 39 - 40 - 41 - 42 - 43 - 44 - 45 - 46 - 47  
US 5 - 6 - 7 - 7,5 - 8 - 8,5 - 9 - 10 - 11 - 12 - 13

Oil-treated leather upper and "High-Tex" waterproof membrane. P.U. moulded ankle inserts. Laces closure and removable elasticated gear-pad. Dual-compound Vibram sole.

Tomaia in pelle pieno fiore con trattamento idrofobico. Membrana interna "High-Tex". Protezione malleolo in P.U. Chiusura con lacci e paramarce rimuovibile. Suola Vibram in gomma a doppia densità.

Tige cuir plein fleur avec traitement hydrophobic. Membrane "High-Tex". Renforts malleole en P.U. Fermeture lacet. Renfort selecteur amovible. Semelle Vibram en double melange.



## BLAZER

**AIR-TECH** AIRCOOL 

ART. 872 / BLAZER / BLACK-LIGHT GREY / BLACK-CAMEL BROWN

EU 39 - 40 - 41 - 42 - 43 - 44 - 45 - 46 - 47  
US 7 - 7,5 - 8 - 8,5 - 9 - 10 - 11 - 12 - 13



Leather and "Micro-Synth" upper. "Air-Tech" vented lining. P.U. moulded ankle inserts. Laces closure and removable elasticated gear-pad. "Air-Cool" patented ventilated sole.

Tomaia in pelle e "Micro-Synth". Fodera interna "Air-Tech". Protezione malleolo in P.U. Chiusura con lacci. Paramarce rimuovibile. Suola in gomma con esclusivo sistema "Air-Cool".

Tige cuir et "Micro-Synth". Doublure "Air-Tech". Renforts malleole en P.U. Fermeture lacet. Renfort selecteur amovible. Semelle caoutchouc et systeme "Air-Cool".



## JUKE 2

**AIR-TECH**

ART. 896 / JUKE 2 / BLACK

EU 39 - 40 - 41 - 42 - 43 - 44 - 45 - 46  
US 7 - 7,5 - 8 - 8,5 - 9 - 10 - 11 - 12

Leather and "Micro-Synth" upper. "Air-tech" vented lining. P.U. moulded ankle inserts. Laces closure and removable elasticated gear-pad. Dual compound rubber sole.

Tomaia in pelle e "Micro-Synth". Fodera interna "Air-Tech". Protezione malleolo in P.U. Chiusura con lacci e paramarce rimuovibile. Suola in gomma a doppia densità.

Tige cuir et "Micro-Synth". Doublure "Air-Tech". Renforts malleole en P.U. Fermeture lacet et renfort selecteur amovible. Semelle caoutchouc double melange.



## MAXX

**AIR-TECH** 

ART. 894 / MAXX / BLACK

EU 37 - 38 - 39 - 40 - 41 - 42 - 43 - 44 - 45 - 46 - 47  
US 5 - 6 - 7 - 7,5 - 8 - 8,5 - 9 - 10 - 11 - 12 - 13

"Soft-Touch" synthetic upper and "Air-Tech" ventilated lining. Reinforced toe and heel inserts. TPU malleolus insert. Laces and velcro closure. High-grip rubber sole.

Tomaia in sintetico "Soft-Touch" e fodera interna "Air-Tech". Puntale e tallone rinforzati. Inserto TPU su malleoli. Chiusura facilitata con lacci e velcro. Suola in gomma ad alto grip.

Tige effect "Soft-Touch". Doublure ventilee "Air-Tech". Renforts pointe, talon. Inserts malleole en TPU. Fermeture lacet et velcro. Semelle en caoutchouc melange special.



## PEPPER 2

**HIGH-TEX** CE  
ADVANCED MEMBRANE

ART. 842 / PEPPER 2 / BLACK

EU 39 - 40 - 41 - 42 - 43 - 44 - 45 - 46 - 47  
US 7 - 7,5 - 8 - 8,5 - 9 - 10 - 11 - 12 - 13

Full-grain leather upper and "High-Tex" membrane. Rear elastic panel. Abs malleolus protection. Removable gear pad. Real rubber oil-proof sole.

Tomaia in pelle pieno fiore. Membrana "High-Tex". Inserto elastico posteriore. Protezione malleolo in Abs. Paramarce sostituibile. Suola antiolio in gomma.

Tige cuir pleine fleur et membrane "High-Tex". Renfort malleole en Abs. Piece selecteur amovible. Semelle melange special.



## METRO

**HIGH-TEX** CE  
ADVANCED MEMBRANE

ART. 835 / METRO / BLACK

EU 39 - 40 - 41 - 42 - 43 - 44 - 45 - 46 - 47  
US 7 - 7,5 - 8 - 8,5 - 9 - 10 - 11 - 12 - 13

Full-grain leather upper and "High-Tex" membrane. P.U. moulded ankle inserts. Zipper closure and removable elasticated gear-pad. Real rubber oil-proof urban sole.

Tomaia in pelle pieno fiore e membrana "High-Tex". Protezione malleolo in P.U. Chiusura con zip e paramarce rimuovibile. Suola in gomma anti-olio.

Tige cuir plein fleur et membrane "High-Tex". Renforts malleole en PU et fermeture eclaire. Renfort selecteur amovible. Semelle caoutchouc melange special.



## NOVO 2

TECH CO3 AIR-TECH

ART. 776 / NOVO 2 / BLACK / BLACK-WHITE

EU 38 - 39 - 40 - 41 - 42 - 43 - 44 - 45 - 46 - 47  
US 7 - 7,5 - 8 - 8,5 - 9 - 10 - 11 - 12 - 13



"Micro-Synth" upper. "Hexagon" vented heel cup. "Tech-Toe" moulded toe protector. Elasticated insert for custom fit. Velcro strap closure. Repleceable "Black-Zinc" slider.

Tomaia in "Micro-Synth". Protezione tallone con ventilazione "Hexagon". Puntale "Tech-Toe" in P.U.. Zona elastica di calzata. Strap velcro di chiusura. Slider sostituibile in "Black-Zinc".

Tige en "Micro-Synth". Insert "Tech-Toe" en P.U.. Renfort talon avec ventilation "Hexagon". Fermeture velcro. Slider "Black-Zinc" amovible.



## STROKE 2

ART. 771 / STROKE 2 / BLACK-GREY

EU 37 - 38 - 39 - 40 - 41 - 42 - 43 - 44 - 45 - 46 - 47  
US 5 - 6 - 7 - 7,5 - 8 - 8,5 - 9 - 10 - 11 - 12 - 13

"Micro-Synth" and suede upper. P.U. moulded heel cup. Elasticated insert for custom fit. Velcro strap closure. Repleceable "Black-Zinc" slider.

Tomaia in "Micro-Synth" e scamosciato. Protezione tallone in P.U.. Zona elastica di calzata. Strap velcro di chiusura. Slider sostituibile in "Black-Zinc".

Tige en "Micro-Synth" et velour. Insert talon en P.U.. Fermeture velcro. Slider "Black-Zinc" amovible.



## HOT-WHEELS 2 KID

ART. 770 / HOT-WHEELS 2 KID / BLACK-GREY / BLACK-WHITE

EU 30 - 31 - 32 - 33 - 34 - 35 - 36  
US 10 - 11 - 12 - 13 - 1 - 2 - 3



"Micro-Synth" and suede upper. Elasticated insert for custom fit. Velcro strap closure. Repleceable P.U. slider.

Tomaia in "Micro-Synth" e scamosciato. Zona elastica di calzata. Strap velcro di chiusura. Slider sostituibile in P.U.

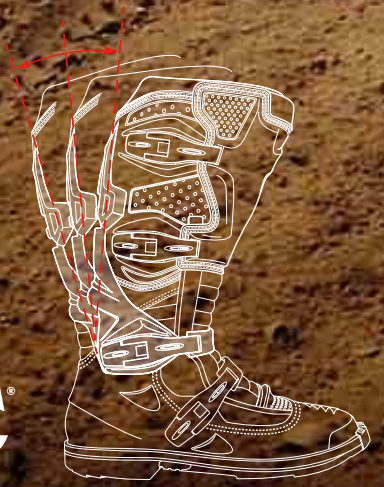
Tige en "Micro-Synth" et velour. Fermeture velcro. Slider P.U. amovible.





# OFF-ROAD/ ENDURO\_LINE

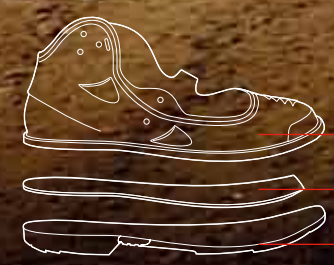
EXCLUSIVE INNOVATION, OPTIMIZED PROTECTION, MAXIMUM DURABILITY



**ESD | motion 2**  
**MX2**

MULTIPLE-PIECES INTEGRATED SECURITY SKELETON TO SUPPORT MOVEMENTS OF FOOT. ALL-AROUND SHELL CONSTRUCTION. INTEGRATED P.U. HEAT-SHIELD. VIBRATION DAMPENING MID-SOLE AND REINFORCED ARCH SUPPORT.

**ALL-AROUND  
CHASSIS**



- ONE-PIECE MOULDED CHASSIS FOR INCREASED PROTECTION AND DURABILITY
- IMPACT DAMPENING EVA MIDSOLE
- DOUBLE-COMPOUND HIGH-GRIPPING SOLE



**EXTREME PRO 3.1** BOOTIE VERSION



ART. 113 / EXTREME PRO 3.1 BOOTIE VERSION / WHITE / BLACK / WHITE-RED / WHITE-BLUE / WHITE-ORANGE / WHITE-GREEN

EU 39 - 40 - 41 - 42 - 43 - 44 - 45 - 46 - 47  
US 7 - 7,5 - 8 - 8,5 - 9 - 10 - 11 - 12 - 13

"Micro-Synth" upper and "Air-Tech" vented lining. "Eso-Motion 2 MX" rear articulation system. Dual-Motion P.U. moulded shin-plate. All-Around P.U. chassis construction. Micro-adjustable and replaceable Alu-buckles. Heavy-duty leather heat-shield. Dual-density rubber sole with reinforced arch support. **Only for 113 EXTREME PRO 3.1 BOOTIE VERSION: Removable inner bootie featuring "D3O" impact protection ankle cups.**

Tomaia in "Micro-Synth" e fodera interna "Air-Tech". Sistema di supporto "Eso-Motion 2 MX". Protezione tibia in PU con articolazione anteriore. Scafo di supporto piede "All-Around". Scudo termico para-marmitta integrato. Chiusura con leve in alluminio micro-regolabili. Suola racing a doppia densità con arcata rinforzata. **Solo per versione 113 EXTREME PRO 3.1 BOOTIE VERSION: Scarpetta interna estraibile con inserti "D3O" impact protection.**

Tige "Micro-Synth" et doublure "Air-Tech". Système de articulation "Eso-Motion 2 MX". Renfort tibia et coque "All-Around" en P.U. Crochets aluminium replaceable. Semelle racing en caoutchouc double melange. **Uniquement pour model 113 EXTREME PRO 3.1 BOOTIE VERSION: Chausson interieur amovible avec inserts de protection "D3O".**

**EXTREME PRO 3.1**



ART. 111 / EXTREME PRO 3.1 / WHITE / BLACK / WHITE-RED / WHITE-BLUE / WHITE-ORANGE / WHITE-GREEN

EU 39 - 40 - 41 - 42 - 43 - 44 - 45 - 46 - 47  
US 7 - 7,5 - 8 - 8,5 - 9 - 10 - 11 - 12 - 13



**EXTREME PRO 3.1 SUPERMOTO VERSION**



ART. 112 / EXTREME PRO 3.1 SUPERMOTO / WHITE

EU 39 - 40 - 41 - 42 - 43 - 44 - 45 - 46 - 47  
US 7 - 7,5 - 8 - 8,5 - 9 - 10 - 11 - 12 - 13





**DUST EVO**

**ART. 107 / DUST EVO / BLACK (ENDURO SOLE) / BLACK-WHITE (MX SOLE)**  
 EU 39 - 40 - 41 - 42 - 43 - 44 - 45 - 46 - 47  
 US 7 - 7,5 - 8 - 8,5 - 9 - 10 - 11 - 12 - 13

**ALL-AROUND CHASSIS** **AIR-TECH** **CE**

"Micro-Synth" upper and "Air-Tech" vented lining. P.U. injected shin and calf plates. "All-Around" P.U. chassis construction. Micro-adjustable and replaceable Alu-buckles. Heavy-duty leather heat-shield. High-grip textured enduro sole.

Tomaia in "Micro-Synth" e fodera interna "Air-Tech". Rinforzo P.U. su tibia e polpaccio. Scafo di supporto piede "All-Around". Scudo termico para-marmitta integrato. Chiusura con leve in alluminio micro-regolabili. Suola enduro grip speciale.

Tige "Micro-Synth" et doublure "Air-Tech". Renforts tibia et mollet en P.U. Coque "All-Around" en P.U. Bouclier thermique paramarmite. Crochets aluminium remplaçable. Semelle enduro mélange special.



**DRAKE**

**ART. 116 / DRAKE / BLACK / BLACK-WHITE**

**AIR-TECH** **D3O** **CE**

EU 39 - 40 - 41 - 42 - 43 - 44 - 45 - 46 - 47  
 US 7 - 7,5 - 8 - 8,5 - 9 - 10 - 11 - 12 - 13

"Micro-Synth" upper and "Air-Tech" ventilated lining. P.U. moulded shin, toe and heel inserts. "D3O" ankle cups. Leather heat-shield. Fully adjustable and replaceable quality buckles. Dual-density vulcanized rubber sole.

Tomaia in "Micro-Synth" e fodera interna "Air-Tech". Protezione stinco, punta e tallone in P.U. Inserti malleolo "D3O". Scudo termico para-marmitta. Chiusura con leve micro-regolabili sostituibili. Suola in gomma a doppia densità.

Tige en "Micro-Synth". Doublure ventilée "Air-Tech". Renforts tibia, pointe et talon en P.U. Inserts malleoles en "D3O". Bouclier thermique paramarmite. Fermeture crochets remplaçable. Semelle racing en caoutchouc double-mélange.

## FALCO TRIAL/ATV\_LINE



Full-grain oil-treated leather upper. P.U. injected shin plate and rear flex area. "D30" ankle cups reinforcements. Adjustable self-locking alu-buckles. Heavy-duty leather heat-shield. Special compound grip sole.

Tomaia in pelle pieno fiore con trattamento idrofobico. Placca frontale e snodo posteriore in P.U.. Insetti caviglia in "D30". Leve in alluminio regolabili e autobloccanti. Scudo termico paramarmitta. Suola di mescola grip speciale.

Tige cuir pleine fleur avec traitement hydrophobic. Renfort tibia en P.U.. Insetts malleoles en "D30". Bouclier thermique paramarmite. Crochets alu. Semelle Falco mélange spécial.

### EDGE PRO

ART. 261 / EDGE PRO / BROWN / BLACK

EU 39 - 40 - 41 - 42 - 43 - 44 - 45 - 46 - 47  
US 7 - 7,5 - 8 - 8,5 - 9 - 10 - 11 - 12 - 13



### EDGE ECO

ART. 260 / EDGE ECO / BLACK

EU 39 - 40 - 41 - 42 - 43 - 44 - 45 - 46 - 47  
US 7 - 7,5 - 8 - 8,5 - 9 - 10 - 11 - 12 - 13

"Micro-Synth" Upper. P.U. injected shin plate and rear rubber insert rear flex area. Adjustable self-locking P.U. buckles. Heavy-duty leather heat-shield. Special compound grip sole.

Tomaia in "Micro-Synth". Placca frontale in P.U. e snodo posteriore in gomma. Leve in plastica micro-regolabili e sostituibili. Scudo termico paramarmitta. Suola di mescola grip speciale.

Tige en "Micro-Synth". Renforts tibia en P.U.. Bouclier thermique paramarmite. Crochets P.U.. Semelle Falco mélange spécial trial.

### VOLT 2 ADV

ART. 110 / VOLT 2 ADV / BROWN

EU 39 - 40 - 41 - 42 - 43 - 44 - 45 - 46 - 47  
US 7 - 7,5 - 8 - 8,5 - 9 - 10 - 11 - 12 - 13

Full-grain oil-treated leather upper "High-Tex" membrane. Malleolus reinforcements. P.U. buckle closure system. Gear change panel. High-grip rubber sole.

Tomaia in pelle con trattamento idrofobico. Fodera interna con membrana "High-Tex". Rinforzo malleolo. Insetto paramarce in P.U. Chiusura con leva auto-bloccante in P.U. Suola in gomma ad alto grip.

Tige cuir avec traitement hydrophobic. Membrane "High-Tex". Renforts malleole en P.U. Renfort selecteur en P.U. Semelle en caoutchouc melange special.

## FALCO KID\_LINE



### LION 2 KID

#### AIR-TECH

ART. 207 / LION 2 KID / WHITE / BLACK

EU 29 - 30 - 31 - 32 - 33 - 34 - 35 - 36 - 37 - 38  
US 9 - 10 - 11 - 12 - 13 - 1 - 2 - 3 - 4 - 5

Full-grain leather upper and "Air-Tech" ventilated lining. P.U. moulded shin and heel inserts. Leather heat-shield. Fully adjustable quality buckles. High-grip rubber sole.

Tomaia in pelle pieno fiore e fodera interna "Air-Tech". Protezione stinco e tallone in P.U.. Scudo termico para-marmitta. Chiusura con leve micro-regolabili. Suola in gomma ad alto grip.

Tige en cuir pleine fleur. Doublure ventilee "Air-Tech". Renforts tibia et talon en P.U.. Bouclier thermique paramarmite. Fermeture crochets. Semelle en caoutchouc.



### EDGE KID

#### AIR-TECH

ART. 262 / EDGE KID / BROWN-BLACK

EU 33 - 34 - 35 - 36 - 37 - 38  
US 13 - 1 - 2 - 3 - 4 - 5

Full-grain oil-treated leather upper and "Air-Tech" ventilated lining. P.U. moulded shin and heel inserts. Leather heat-shield. Fully adjustable quality buckles. High-grip rubber sole.

Tomaia in pelle pieno fiore con trattamento idrofobico e fodera interna "Air-Tech". Protezione stinco e tallone in P.U.. Scudo termico para-marmitta. Chiusura con leve micro-regolabili. Suola in gomma ad alto grip.

Tige en cuir pleine fleur traitement hydrophobic. Doublure ventilee "Air-Tech". Renforts tibia et talon en P.U.. Bouclier thermique paramarmite. Fermeture crochets. Semelle en caoutchouc.



# CUSTOM\_LINE

STRONG IDENTITY, ORIGINAL CRAFTSMANSHIP, WEARING RESISTANCE

**ACF**|men

**ACF**|women

CRAFT CONSTRUCTIVE SYSTEM OF THE BOOT AROUND THE LAST REPRODUCING MEN'S OR WOMEN'S FOOT ANATOMY. THIS TECHNIQUE ALLOWS TO REACH A HIGHER LEVEL OF COMFORT, TO EXTEND UTILIZATION TIME AND TO MATCH DIFFERENT RIDING CONDITIONS.



**BRAVE**

**ART. 805 / BRAVE / BLACK / BROWN**

**EU** 36 - 37 - 38 - 39 - 40 - 41 - 42 - 43 - 44 - 45 - 46 - 47  
**US** 4 - 5 - 6 - 7 - 7,5 - 8 - 8,5 - 9 - 10 - 11 - 12 - 13

Full-grain oil-treated leather upper and lining. Adjustable straps on instep and calf. Rounded- toe reinforced counter. Steel-shank oilproof rubber sole.

Tomaia in pelle pieno fiore con trattamento idro-fobico. Fibbie di regolazione su caviglia e polpaccio. Punta rotonda rinforzata. Suola anti-olio con inserto metallico.

Tige cuir plein fleur avec pointe ronde. Crochets metal pour réglage de fermeture. Semelle caoutchouc avec insert acier.



**BIKER**

**ART. 800 / BIKER / BLACK / BROWN**

**EU** 36 - 37 - 38 - 39 - 40 - 41 - 42 - 43 - 44 - 45 - 46 - 47  
**US** 4 - 5 - 6 - 7 - 7,5 - 8 - 8,5 - 9 - 10 - 11 - 12 - 13

Full-grain oil-treated leather upper and lining. Authentic pull tabs for easy fitting. Squaredtoe reinforced counter. Steel-shank oil-proof rubber sole.

Tomaia in pelle pieno fiore con trattamento idro-fobico. Cinghie di presa per calzata rapida. Punta quadrata rinforzata. Suola anti-olio con inserto metallico.

Tige cuir plein fleur avec pointe carrée. Sangles pour ajustement rapide. Semelle caoutchouc avec insert acier.



**SPIRIT**

**ART. 801 / SPIRIT / BLACK**

**EU** 39 - 40 - 41 - 42 - 43 - 44 - 45 - 46 - 47  
**US** 4 - 5 - 6 - 7 - 7,5 - 8 - 8,5 - 9 - 10 - 11 - 12 - 13

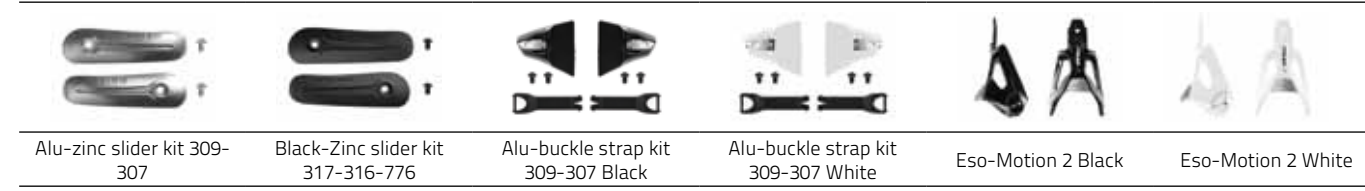
Full-grain oil-treated leather upper and lining. Quick-fit elasticated ankle inserts. Squared-toe reinforced counter. Steel-shank oil-proof rubber sole.

Tomaia in pelle pieno fiore con trattamento idro-fobico. Inserto elastico su malleolo per calzata rapida. Punta quadrata rinforzata. Suola anti-olio con inserto metallico.

Tige cuir plein fleur avec pointe carree. Insert elastique malleole. Semelle caoutchouc avec insert acier.

## SPARE PARTS

### RACING LINE



Alu-zinc slider kit 309-307    Black-Zinc slider kit 317-316-776    Alu-buckle strap kit 309-307 Black    Alu-buckle strap kit 309-307 White    Eso-Motion 2 Black    Eso-Motion 2 White



D30 removable inner bootie 309    Compression Race Sock

### TOURING LINE



Black/Alu-plastic buckles straps kit 415    P.U. buckles straps kit 411-412-116 Black    Removable gear-pad 654-652-650 Women    Removable gear-pad 896-835-842 Men    Carbon 2.0 Sock    Tourer Sock

### ALL-USES LINE



Alu-zinc slider kit 771    P.U. slider kit 770 Black    P.U. ankle slider kit 776-771-770 Black

### OFFROAD LINE



Eso-Motion 2 MX Black    Eso-Motion 2 MX White    Metal-toe protector 113-112-111-107-207-415    Alu-plastic buckles straps kits kit 113-111-107 Black    Alu-plastic buckles straps kits kit 113-112-111 White    Alu-plastic buckles straps kits kit 261-260 Black



P.U. buckles kit 110 Black    P.U. buckles kit 207-262 Black-White    113-107 Mx sole Black-White    107 Enduro sole Black    116 MX sole Black-White    112 Supermoto Sole+Slider kit



112 Supermoto Slider kit Black    D30 removable inner bootie 309    D30-Hightex removable inner bootie 107    Compression MX Sock

## STORE SALES SUPPORT



ART. CTRDPL / COUNTER CARDBOARD DISPLAY KIT



ART. CHMT / CHAIR-MAT KIT



ART. TSHRT1 / BLACK T-SHIRT



ART. GRDPL / GROUND METAL DISPLAY KIT



ART. TSHRT2 / RED T-SHIRT



ART. TSHRT3 / WHITE T-SHIRT



ART. HD1 / HOODIE BLACK



ART. HD2 / HOODIE RED



ART. HD3 / HOODIE WHITE



ART. SLMNKT / SALES-MEN KIT



ART. SHDRBG / SHOULDER BAG



ART. WSTPKT / WAIST POCKET



ART. STKRS / STICKERS KIT



ART. KEYHDR / KEYHOLDER



ART. HT1 / HAT BLACK



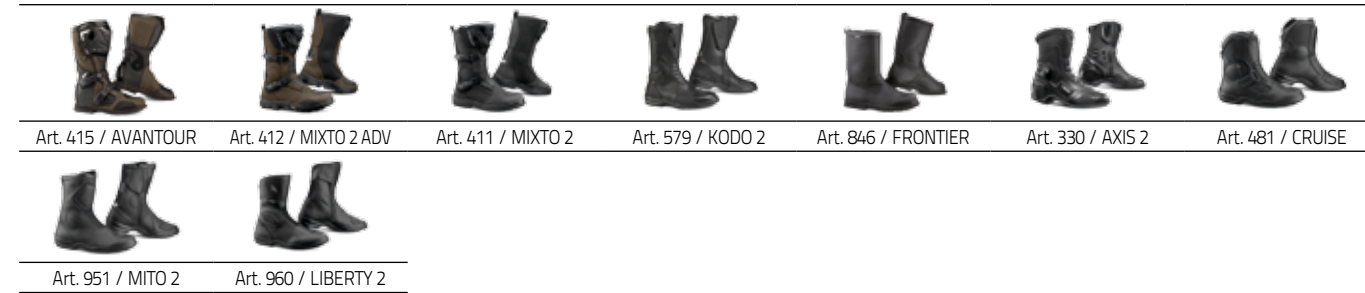
ART. HT2 / HAT RED

# COLLECTION OVERVIEW

## RACING LINE



## TOURING LINE



## WOMEN LINE



## ALL-USES/URBAN LINE



## OFF-ROAD/ENDURO LINE



## CUSTOM LINE



[WWW.GIANNIFALCO.COM](http://WWW.GIANNIFALCO.COM)

### REPRODUCTION RIGHTS:

Gianni Falco srl reserves the right, at any time, to make any necessary modifications and improvements to its products.  
La Gianni Falco srl si riserva il diritto, in qualunque momento, di apportare modifiche necessarie e migliorative ai suoi prodotti.

It is forbidden to reproduce any part of this catalogue.  
È vietata la riproduzione anche parziale di questo catalogo.





**GIANNI FALCO S.R.L.**

VIA MADONETTE 2/1

31030 CASELLE DI ALTIVOLE - TREVISO - ITALY

PHONE: 0039 0423 915272

FAX: 0039 0423 915950

INFO@GIANNIFALCO.COM

**WWW.GIANNIFALCO.COM**

