

MATT

m o t o



BALACLAVAS

NECKWARMERS

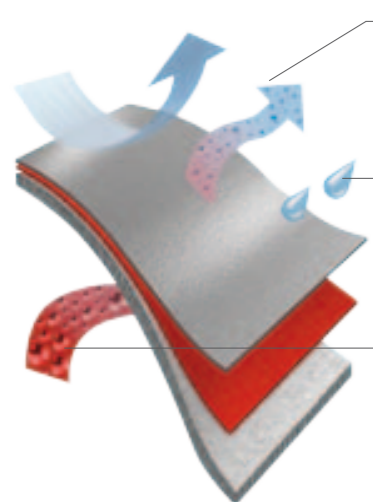
CHEST PROTECTION

SCARFS



WIND STOPPER

The WINDSTOPPER® membrane is an ultra thin protective layer which is laminated to a lightweight textile layer, making it totally windproof. It is made of the versatile polymer PTFE (polytetrafluorethylene) which is expanded to create a microporous structure. These micropores are 900 times larger than water vapor molecules, allowing perspiration to pass through unhindered. This means that the WINDSTOPPER® membrane adds total windproofness to any textile without perceptibly restricting its initial breathability or weight.



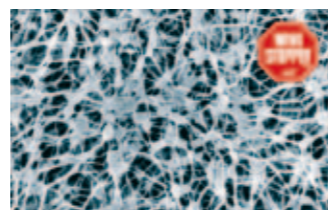
TOTAL WINDPROOFNESS
Protects your body's warmth from the chilling effects of wind and weather.

SNOW, WATER RESISTANT

MAXIMUM BREATHABILITY
Prevents overheating and perspiration build-up by allowing moisture vapor to easily escape.

Outer shell
WINDSTOPPER membrane
Inner layer

EASY CARE:
Always adhere to manufacturer's care instructions. If not provided, we recommend the following: Machine wash regularly at 40°C (104 °F). Tumble dry or iron at low heat.

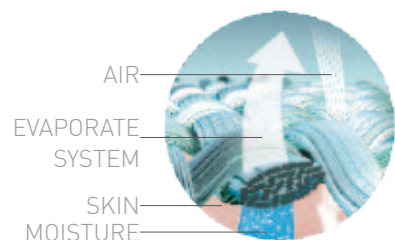


COOLMAX EXTREME

Why choose COOLMAX® fabric? For the simple reason of staying dry and comfortable when you start to perspire.

Sweating is one of the body's natural mechanisms to stay cool. Engineered with special technology to wick moisture and enhance drying, COOLMAX® fabric helps you stay dry and energized - exactly what you need to feel comfortable not only during the day, but also through your toughest workouts.

Since 1986, COOLMAX® fabric has been delivering benefits to help top athletes push harder and longer. Today, COOLMAX® fabric appeals to the fashion conscious who prefer a cool, soft and high performance fabric that fits every lifestyle. COOLMAX® fabric is the confident, sophisticated choice for active consumers.



100% POLYESTER MICROFIBER

Microfiber is a very finest fiber, which in its functions is breathable and at the same time provides reliable protection against climate conditions, it helps to wick moisture body away, and has the comfort of natural fibers. It has enough strength, although the filaments are superfine and nice durability and ease care.

Matt make the miracle scarfs in a tubular seamless construction, which permit a lot of different uses and great functionality.

MULTIFUNCTIONAL LIFESTYLE HEADWEAR



Use it at your own way !



Multi garmen for all kind of sport activities, it provides maximum confort against wind, snow, sun, etc. It is made without seams and the MATT scarfs is resistant and does not loose its shape. The high technology fabric guarantees high resistance and unbeliebly quick to dry.

MERINO WOOL

Merino wool is common in high-end, performance athletic wear. Typically meant for use in running, hiking, skiing, mountain climbing, cycling, and in other types of outdoor aerobic exercise, these clothes command a premium over synthetic fabrics.

Several properties contribute to merino's popularity for exercise clothing, compared to wool in general and to other types of fabric:

- Merino is excellent at regulating body temperature, especially when worn against the skin. The wool provides some warmth, without overheating the wearer. It draws moisture (sweat) away from the skin, a phenomenon known as wicking. The fabric is slightly moisture repellent (keratin fibers are hydrophobic at one end and hydrophilic at the other), allowing the user to avoid the feeling of wetness.
- Like cotton, wool absorbs water (up to 1/3 its weight), but, unlike cotton, wool retains warmth when wet, thus helping wearers avoid hypothermia after strenuous workouts (climbs) or weather events.
- Like most wools, merino contains lanolin, which has antibacterial properties.
- Merino is one of the softest types of wool available, due to finer fibers and smaller scales.
- Merino has an excellent warmth-to-weight ratio compared to other wools, in part because the smaller fibers have microscopic cortices of dead air, trapping body heat similar to the way a sleeping bag warms its occupant



THERMO COOL

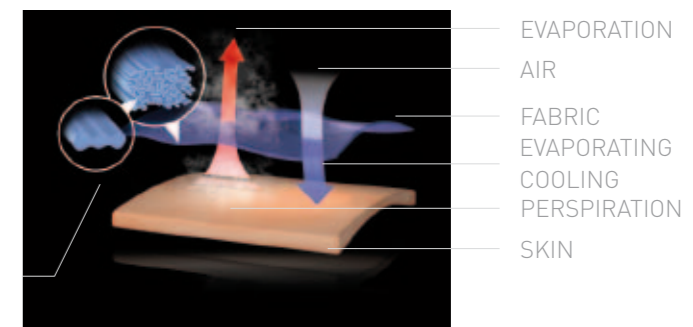
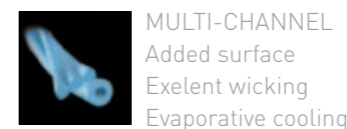
Thermo Cool is a multi-functional and ecological evolution born from ADVANSA's technology experience modified cross-section fibres.

The ADVANSA Thermo Cool combination is a unique blend of fibres with a channeled surface providing benefits beyond what can be expected by just one type or fibre in a single yarn.

A wide portfolio of products is being developed including a variety of innovative performance cross-sections.

A NEW TECHNOLOGY ANSWERING CONSUMERS EXPECTATIONS

ADVANSA Thermo Cool is designed to optimize the body's natural thermoregulation capabilities through smart fibre cross-sections: providing evaporative cooling or thermo-buffering according to the wearer's needs.



POLARTEC THERMAL PRO

HIGH-PERFORMANCE INSULATION WITH UNIQUE FLEECE TEXTURES

Polartec® Power Stretch® fabrics feature body-hugging 4-way stretch and are very breathable.

They keep you dry when you sweat and provide warmth without weight. These are the most versatile outdoor and fitness clothing fabrics available today. Many of the fabrics feature a proprietary construction with two unique surfaces: the durable, smooth outer layer is wind- and abrasion-resistant; the soft inner layer pulls moisture away from your skin keeping you dry, warm and comfortable. Other fabrics in the series feature compression stretch which can improve performance and reduces the chance of certain types of stop-go injuries. Climbing, running—even taking on an Ironman competition—are easier when your clothing doesn't inhibit freedom of movement.



POLARTEC CLASSIC

THE ORIGINAL AND THE BEST FLEECE ON THE MARKET.

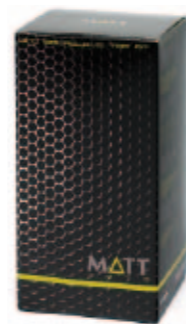
Polartec® Classic fabrics are the reference standard for lightweight warmth and breathability. This is the original fleece offering unparalleled quality and durability. Polartec® Classic fabrics have been the primary insulation layer of choice among experienced outdoor enthusiasts for nearly three decades.



WIND BALACLAVA TOP MT

8701

Balaclava with anatomical pattern, covering neck, chest, head and nape.
Windstopper softshell by Gore covering neck, chest and nape acts against the wind and it is at the same time breathable.
Flat sewings.



8706

WIND NECK HORNET

Neckwarmer of Windstopper softshell by Gore covering neck and nape acts against the wind and it is at the same time breathable.



8705

WIND NECK HORNET

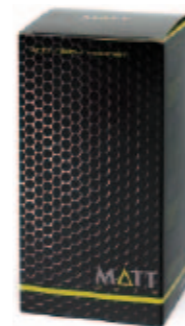
Neckwarmer of Windstopper softshell by Gore covering neck and nape acts against the wind and it is at the same time breathable.



WIND CHEST TRACK

8702

Anatomical pattern, covering neck, chest and nape.
Windstopper softshell by Gore covering neck, chest and nape acts against the wind and it is at the same time breathable.
Flat sewings.



WIND CHESTNECK ROAD

8703



8701 135

Anatomical pattern, covering neck, chest, head and nape, with a microfiber neck add on top, it could be used also as balaclava.
Windstopper softshell by Gore covering neck, chest and nape acts against the wind and it is at the same time breathable.
Flat sewings.



8704

WIND NECK GT PLUS

Neckwarmer of Windstopper softshell by Gore covering neck and nape acts against the wind and it is at the same time breathable.
Convertible as a cap.



8704 135

CAMO GRIS



8703 695

GET LUCKY



8703 327

JARE



8704 157

CAMO LILA



8704 696

MATT NEGRE



8704 646

INFINIT NEGRE



8703 665

GET JARE



8703 157

CAMO TARONJA



8704 697

GRANER



8704 609

LETTERS



8704 555

MATT SCARFS

8795 / 8796

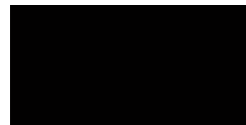
8795 / 8796

MATT SCARFS

MIDGREY VGRX

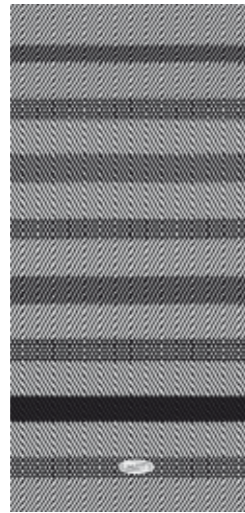


scarfs ref.
8795 698

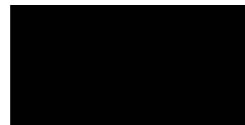


polar scarfs ref.
8796 698

PATTERN ACER



scarfs ref.
8795 651

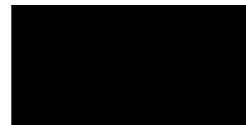


polar scarfs ref.
8796 651

INFINIT NEGRE



scarfs ref.
8795 665

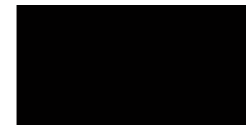


polar scarfs ref.
8796 665

CELTS



scarfs ref.
8795 545

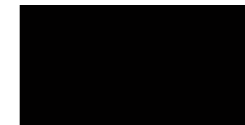


polar scarfs ref.
8796 545

CELTIC



scarfs ref.
8795 264

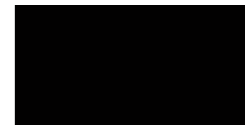


polar scarfs ref.
8796 264

MUCCA



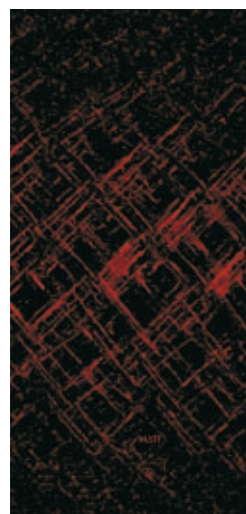
scarfs ref.
8795 503



polar scarfs ref.
8796 503

8796 698

PROFUNDITAT ROIG



scarfs ref.
8795 669



polar scarfs ref.
8796 669

PROFUNDITAT NG



scarfs ref.
8795 672



polar scarfs ref.
8796 672

STRIPES 570



scarfs ref.
8795 570



polar scarfs ref.
8796 570

ZEBRA

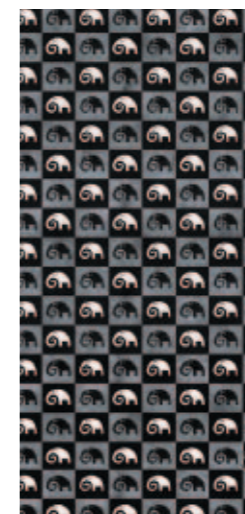


scarfs ref.
8795 253



polar scarfs ref.
8796 253

SAVANNAH



scarfs ref.
8795 519



polar scarfs ref.
8796 519

PUMA



scarfs ref.
8795 687



polar scarfs ref.
8796 687

MATT SCARFS

8795 / 8796

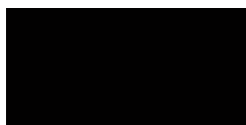
8795 / 8796

MATT SCARFS

MATT NEGRE



scarfs ref.
8795 646

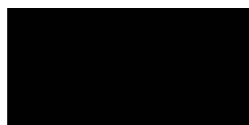


polar scarfs ref.
8796 646

LETTERS

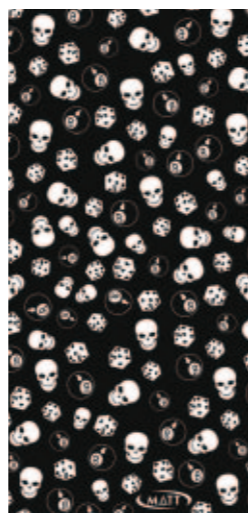


scarfs ref.
8795 555

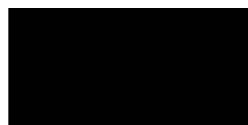


polar scarfs ref.
8796 555

GET LUCKY



scarfs ref.
8795 327

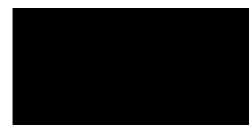


polar scarfs ref.
8796 327

CAMO KABLA



scarfs ref.
8795 702

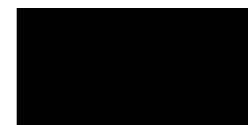


polar scarfs ref.
8796 702

CAMO BLAU



scarfs ref.
8795 694

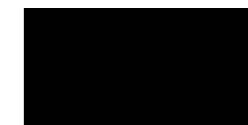


polar scarfs ref.
8796 694

CAMO GRIS

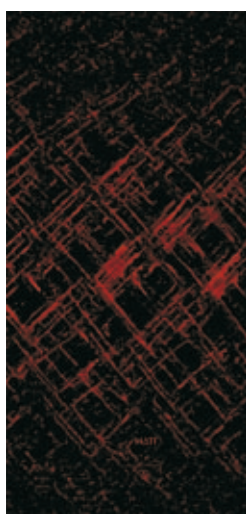


scarfs ref.
8795 106



polar scarfs ref.
8796 106

MARY



scarfs ref.
8795 210



polar scarfs ref.
8796 210

SKULLY



scarfs ref.
8795 617



polar scarfs ref.
8796 617

CAMO VD



scarfs ref.
8795 106



polar scarfs ref.
8796 106

CAMO LILA



scarfs ref.
8795 696



polar scarfs ref.
8796 696

CAMO NL

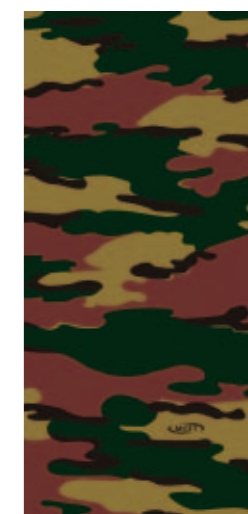


scarfs ref.
8795 630



polar scarfs ref.
8796 630

CAMO BE



scarfs ref.
8795 631



polar scarfs ref.
8796 631

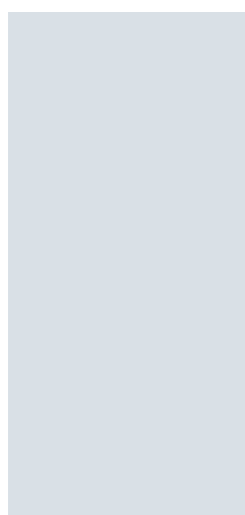
MERINO WOOL SCARFS

8733

Merino wool is common in high-end, performance athletic wear. Typically meant for use in running, hiking, skiing, mountain climbing, cycling, and in other types of outdoor aerobic exercise, these clothes command a premium over synthetic fabrics. Synthetic polyamides are commonly used in sportswear due to their extreme durability and strength and elasticity. Combination of merino wool and polyamide give to users a great feeling and performance.



ACERO



8733 621

ANTRACITA



8733 129

NEGRO



8733 135

THERMO COOL SCARFS

8748

Merino wool is common in high-end, performance athletic wear. Typically meant for use in running, hiking, skiing, mountain climbing, cycling, and in other types of outdoor aerobic exercise, these clothes command a premium over synthetic fabrics. Synthetic polyamides are commonly used in sportswear due to their extreme durability and strength and elasticity. Combination of merino wool and polyamide give to users a great feeling and performance.

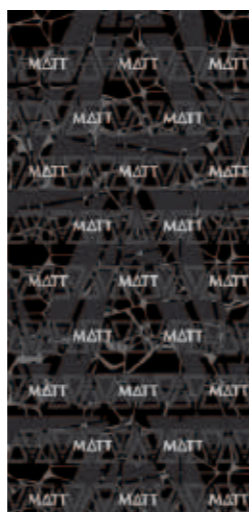


CAMO THERMO



8748 631

MATT THERMO



8748 646

8578



THERMOCOOL NECKWARMER

THERMOCOOL NW NEGRE



8798 NG

8711



POLARTEC CLASSIC 200 SCARFS

POLARTEC 200 NEGRE



8711 NG

POLARTEC 200 ANTRACITA



8711 AN

8783



FASHION POLAR SCARFS

FASHION POL NEGRE



8783 NG

FASHION POL ANTRACITA

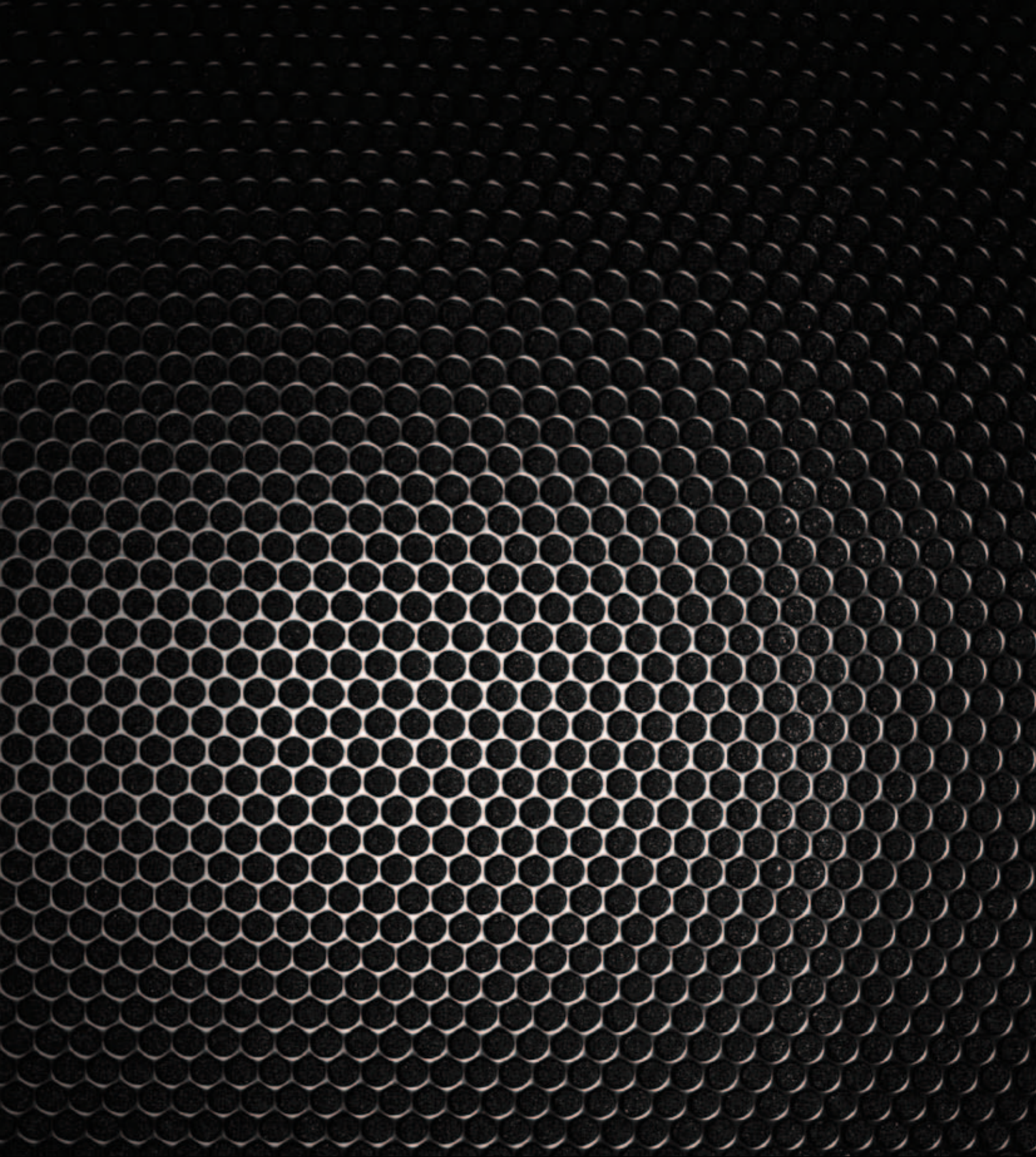


8783 AN

FASHION POL ROJO



8783 RJ



MATT

MATOLLO SPORTS S.A.

C/Zamora, 45-47 4º-1ª 08400 Barcelona (SPAIN)

NIF: ESA8569493

Tel: 34 933 090 104 Fax: 34 933 009 559 info@mattsports.com

www.matt.eu